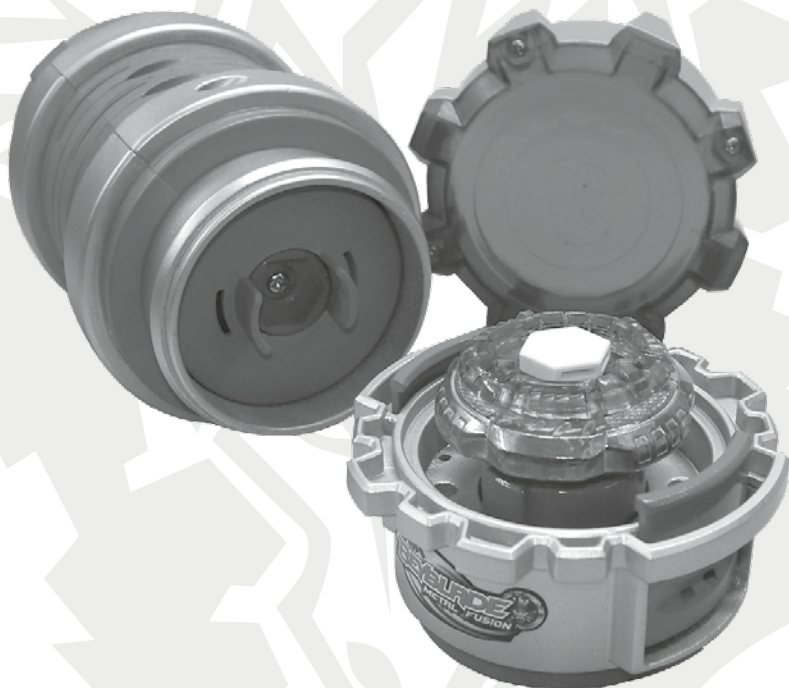


AGES 8+

19699

ASSEMBLY CHAMBER™*



Works with all Metal Fusion Tops released in 2010.
Beyblade Metal Fusion tops sold separately.
Product shown in fantasy situation.

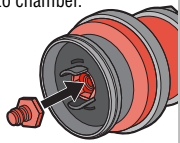
⚠ WARNING:

Do not use Beyblade™ tops or
Beystadium™ (sold separately) on
tables or other elevated surfaces.

TO USE:

1. Remove chamber from assembly core. Place 4 pieces on core as shown. (Top pieces not included.) Snap Face Bolt into chamber.

Snap Face Bolt into chamber.



CHAMBER

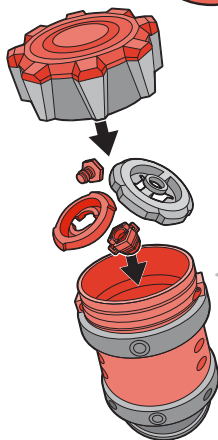
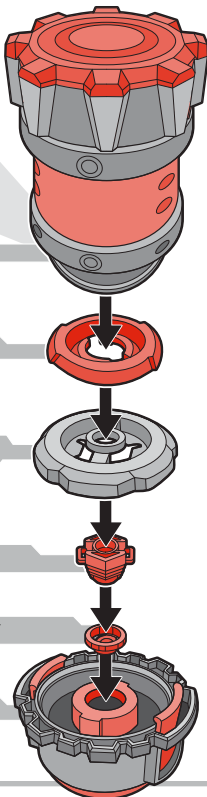
ENERGY RING™*

FUSION WHEEL™*

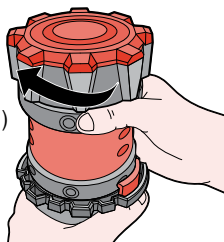
SPIN TRACK™*

PERFORMANCE TIP™*

ASSEMBLY CORE

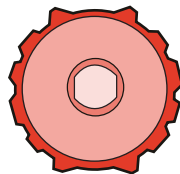


2. Attach chamber to assembly core. Rotate chamber in a clockwise direction (see arrow in illustration) until you hear a clicking sound. This sound means the top is assembled.

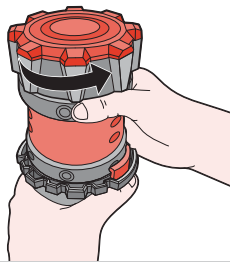


3. Remove chamber from core. Remove top.

The assembly core has a built-in assembly tool if you wish to make manual adjustments to your top.



- Use the chamber to disassemble the top:
- Place top on assembly core. Attach chamber in a counterclockwise direction (see arrow in illustration)



When not using the chamber, you can store some tops and/or top pieces inside. (Sold separately)



Product and colors may vary.
 © Takafumi Adachi, MFBBProject, TV Tokyo
 Manufactured under license from TOMY Company, Ltd.
 ®* and/or TM* & © 2010 Hasbro. All Rights Reserved.
 TM & ® denote U.S. Trademarks.

PN 7069520000



Battle online†
 at BeyBladeBattles.com!

†Website available for a limited time only.